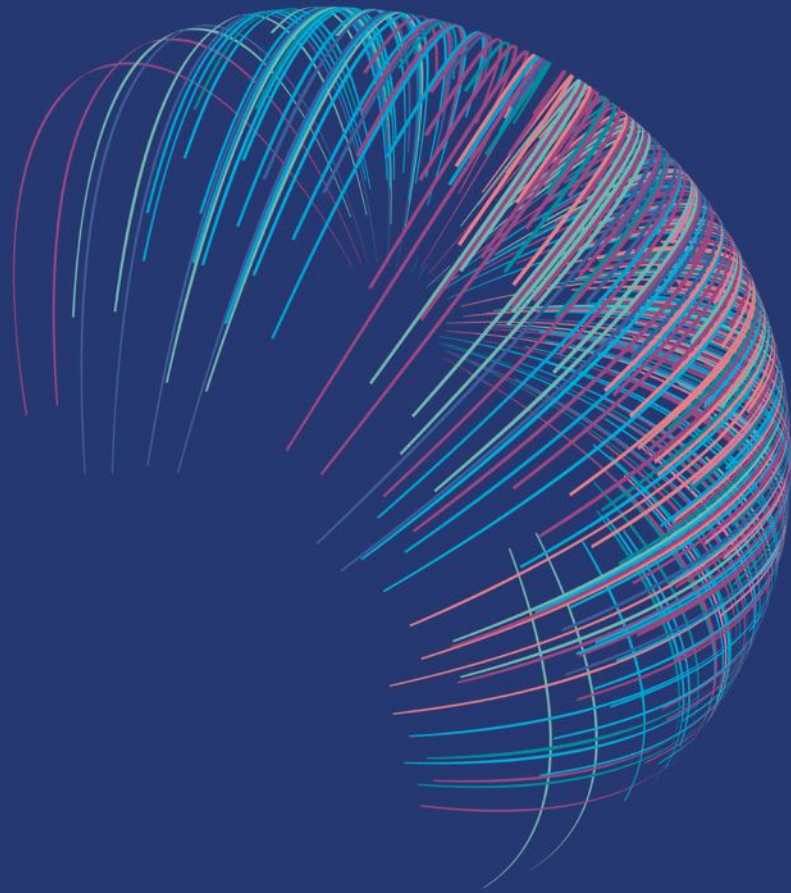


Princeton Digital Group

Internet Infrastructure



JAKARTA, BINTARO JB1

Located in the south-west of Jakarta bordering the South Tangerang just 30-minutes from the Soekarno-Hatta International Airport, Bintaro is a well-appointed township that is supported by high quality educational, recreational, and healthcare facilities with excellent transportation links to all parts of the Jakarta Metropolitan Area, or the “Jabodetabek” as known locally.

The development of this flourishing satellite city began in 1979 and continues to grow to this day. Bintaro provides a conducive business environment with development of fiber optics infrastructure and stable electricity supply across the area that offers a large potentiality in expanding its digital landscape and supporting the scalability needs of enterprise customers and cloud providers looking to expand into the region.

Within proximity to two train stations, our data center in Bintaro is set in a strategic location for both hyperscalers and enterprises alike, providing our clients with ease of travel from both in and out of Jakarta's central business district.

DATA CENTER OVERVIEW

Address: _____ Jl. HR. Rasuna Said Kav 6-7 Kawasan CBD
Bintaro Tgr. Sel., Kota, Pd. Jaya, Pd. Aren,
Kota Tangerang Selatan, Banten 15220

Latitude/Longitude: _____ -6.276806, 106.718361

Gross Floor Area: _____ 4,876 m²

Raised Floor Area: _____ 2,121 m²

Slab-to-slab Height: _____ 4.7 m

Floor Loading: _____ 4.9 kN/m²

Loading Bay: _____ 1

Staging Rooms: _____ 2

Freight Lift (2,500 kg): _____ 1

COOLING

- PAC (Precision Cooling System) with N+1
- DX cooling system with N+1 and Dual Compressor
- Generator supported mechanical services

TELECOMMUNICATIONS

- Carrier neutral network services and multiple service providers (Telkom, i-forte, XL Axiata)
- Two (2) diverse fiber entry vaults

ONSITE OPERATIONAL SUPPORT

- Secure storage and staging rooms available for use
- Office space available for BCP
- 24x7 onsite Remote Hands engineers
- Continuous monitoring of Building Management System (BMS) by the operations team
- Real-time monitoring and alarm notifications of all critical data center infrastructure

POWER

- Battery Life: 2 hours
- Two (2) diverse and redundant 20kV utility power supplies and substations
- Diesel generators in N+1 redundancy for IT Load
- Above ground fuel storage providing up to 48-hours of support at full load
- 2N UPS Configuration

SMOKE DETECTION AND FIRE SUPPRESSION SYSTEMS

- FM200 in Electrical Rooms and Data Halls
- Main Control Fire Alarm (MCFA) for sprinklers, hydrant systems and fire extinguishers, in other rooms
- 3-hour fire rated doors and partitions
- 24x7 alarm monitoring integrated with Building Management System (BMS)

SECURITY & ACCESS CONTROL

- Data center security accessible by access ID and biometrics (fingerprint scan)
- 3m high perimeter fencing
- IT Room, CCTV Monitor Rows
- 24x7 onsite security
- 24x7 onsite manned guards
- 24x7 comprehensive CCTV coverage with a total of 112 cameras

ACCREDITATIONS

- ISO/IEC 27001
- ISO 9001
- Tier 3 Design (Concurrent Maintainability)
- OHSAS 18001:2007

Princeton Digital Group

Internet Infrastructure

To get a first-hand look into any of our data centers,
e-mail us at visitus@princetonondg.com for a guided tour.

www.princetonondg.com

© 2020 Princeton Digital Group. All Rights Reserved